

Excelon® design allows in-line or modular installation

Quick release bayonet bowl.

Flow sensor provides a nearly constant oil/air ratio over a wide range of flows

Highly visible, prismatic liquid level indicator lens on metal bowls

All round (360°) visibility of sight-feed dome for ease of drip rate setting

Micro-fog and oil-fog



**Technical data**

**Fluid:**

Compressed air, neutral gases  
NOTE: Contact technical support for use with other media.

Maximum pressure:

Transparent bowl: 150 psig (10 bar)

Metal bowl: 250 psig (17 bar)

**Operating temperature\*:**

Metal bowl: (72) -30° to 150°F (-34° to 66°C)

(73, 74) -30° to 175°F

(-34° to 80°C)

Transparent bowl: -30° to 125°F

(-34° to 51°C)

\*Air supply must be dry enough to avoid ice formation at temperatures below 35°F (2°C).

**Materials**

**L72**

Body: zinc  
Elastomers: nitrile  
Transparent bowl: polycarbonate  
Metal bowl: zinc  
Liquid level indicator lens (metal bowl): transparent nylon  
Sight-feed dome: transparent nylon  
Elastomers: chloroprene, nitrile, & Geolast

**L73, L74**

Body: aluminum  
Transparent bowl: polycarbonate  
Guarded transparent bowl: polycarbonate with aluminum guard  
Metal bowl: aluminum  
Liquid level indicator lens (metal bowl): transparent nylon  
Sight-feed dome: transparent nylon  
Elastomers: chloroprene, nitrile

**Microfog:**

Fine mist lubrication with oil particle size typically less than 2µm. For use in lengthy air lines or multiple valve and cylinder circuits.

**Oilfog:** Suitable for heavy lubrication systems such as single cylinder air motors and air tools.

**Ordering information**

Models listed include PTF threads, manual drain, and metal bowl with plastic liquid level indicator.

ISO Symbols	Type	Port Size	Model*	Flow** scfm (dm3/s)	Nominal bowl capacity (oz)	Weight lb (kg)†
<p>With Drain</p>	Micro-Fog	1/4"	L72M-2AP-QEN	51 (24)	2.2	1.1 (0.49)
	Oil Fog	1/4"	L72C-2AP-QEN	51 (24)	2.2	1.1 (0.49)
	Micro Fog	3/8"	L73M-3AP-QDN	60 (28)	3.5	1.1 (0.50)
	Oil Fog	3/8"	L73C-3AP-QDN	60 (28)	3.5	1.1 (0.50)
	Micro Fog	3/8"	L74M-3AP-QDN	114 (54)	7.0	1.70 (0.77)
	Oil Fog	3/8"	L74C-3AP-QDN	118 (56)	7.0	1.70 (0.77)
	Micro Fog	1/2"	L74M-4AP-QDN	154 (73)	7.0	1.61 (0.73)
	Oil Fog	1/2"	L74C-4AP-QDN	192 (91)	7.0	1.61 (0.73)
	Micro Fog	3/4"	L74M-6AP-QDN	142 (67)	7.0	1.55 (0.71)
	Oil Fog	3/4"	L74C-6AP-QDN	186 (88)	7.0	1.55 (0.71)

\* Models listed in the order table must not be located downstream of frequently cycling directional control valves. Order the optional bi-directional Oil-Fog Lubricator for use under such conditions.

\*\* Typical flow with 90 psig (6.3 bar) inlet pressure and a pressure drop of 7 psig (0.5 bar).

† (74) Lubricators with 1 quart (1 liter) metal bowl: Add 2.01 lbs (0.91 kg).

Options selector

L7\*\*\*-\*\*-PQ\*\*N

Series	Substitute
72	2
73	3
74	4
Type	Substitute
Oil-fog	C
Micro-fog	M
Port size	Substitute
1/4 (72, 73)	2
3/8 (72, 73, 74)	3
1/2 (73, 74)	4
3/4 (74)	6
Threads	Substitute
PTF	A
ISO G parallel	G

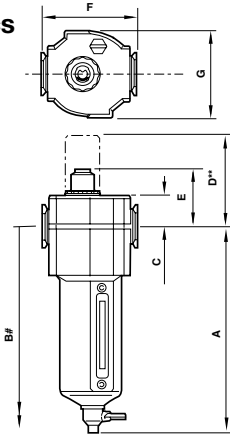
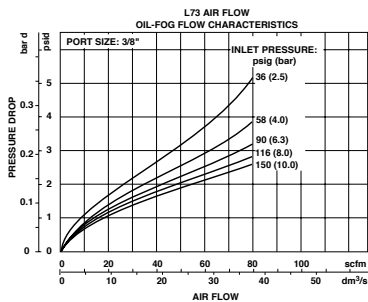
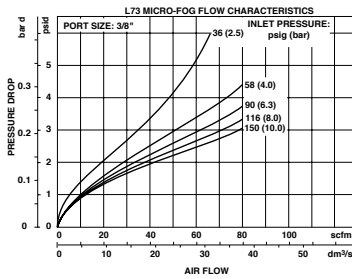
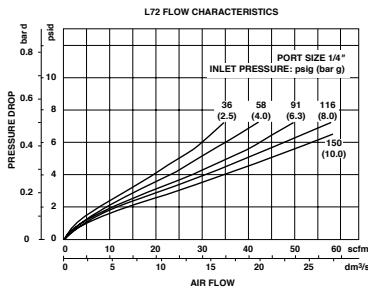
Bowl	Substitute
1-qt metal w/liquid level indicator (74)	A
Metal w/ liquid level indicator	D
Long metal w/liquid level indicator (72)	E
Transparent with guard (73, 74)	P
Transparent (72, 73)	T

Accessories

	Wall mounting bracket*	Pipe adapters (quantity of 1) (NPT)	Quikclamp® (quantity of 1)	Quikclamp® and wall bracket (quantity of 1)	Quick fill nipple	Service Kit Seal and gasket
L72	4224-50	4215-02 (1/4) 4215-03 (3/8)	4214-51	4214-52		4382-500 (72M/C)
L73	4424-50	4315-01 (1/4) 4315-02 (3/8) 4315-03 (1/2) 4315-04 (3/4)	4314-51	4314-52	18-011-024	4382-600 (73M/C)
L74	4324-50	4315-02 (3/8) 4315-03 (1/2) 4315-04 (3/4)	4314-51	4314-52 4314-55 (1-qt bowl)	18-011-024	4382-700 (74M/C)

\* Bracket kit does not include wall mounting screws.

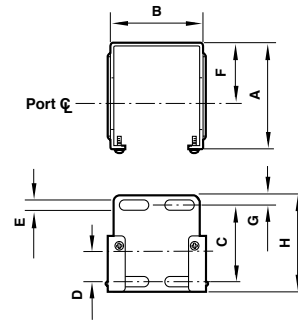
Typical performance characteristics



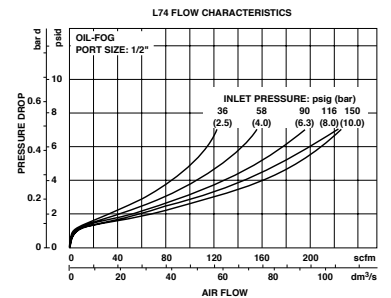
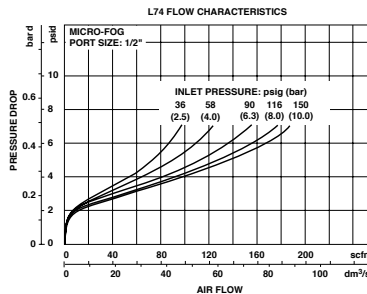
\*\* Optional Pyrex sight-feed dome.  
# Minimum clearance required to remove bowl.

Series	A	B	C	D	E	F	G
72	5.83	9.13	0.75	2.52	1.61	1.97	1.89
73	6.15	10.04	0.98	2.76	1.85	2.68	2.44
74	6.95	10.87	0.98	2.68	1.85	3.15	2.91
	A	B	C	D	E	F	G
74 w/1 qt bowl closed bottom	11.14	20.0	0.98	2.68	1.85	3.15	2.91
74 w/1 qt bowl w/drain	11.93	20.0	0.98	2.68	1.85	3.15	2.91

Mounting bracket



Series	A	B	C	D	E	F	G	H
72	2.36	1.65	1.54	0.73	0.16	1.50	0.24	2.01
73	2.64	2.36	1.89	0.75	0.28	1.50	0.24	2.40
74	3.11	2.72	1.97	0.79	0.20	2.01	0.24	2.40



Dimensions in inches (mm)