

## DX60 Series Hygienic Tanker Valve: Part Number Key



DX60 Series Hygienic Tanker Valve Part Number Key		Valve Series	Valve Body				Material	Seal Material	Valve Cover	Options	Valve Body Style Port Configurations	
		DX60	30	10	A	1	G	V	1			
<b>Valve Size</b>	<b>Code</b>											
3"	30											
3" at position 6 / 2" at positions 3, 9, or 12	32											
3" at position 6 / 2½" at positions 3, 9, or 12	35											
6" to trailer / 3" at 3, 6, 9, or 12	63											
<b>Valve Body Style</b>	<b>Code</b>											
L (2-port shut-off) position 6	10											
Multiport (3-port shut-off) positions 6 and 3	20											
Multiport (3-port shut-off) positions 6 and 9	30											
Multiport (3-port shut-off) positions 6 and 12	40											
<b>Surface Finish</b>	<b>Code</b>											
32R <sub>s</sub> (ID mechanical polish)	A											
<b>Connections</b>	<b>Code</b>											
Flange (to trailer) x male threaded bevel <sup>1</sup>	1											
Plain bevel (to trailer) x male threaded bevel	2											
<b>Stainless Steel Wetted Parts</b>	<b>Code</b>											
304	G											
316L (optional)	R											
<b>Seal Material</b>	<b>Code</b>											
FKM	V											
Buna (optional)	B											
<b>Valve Cover</b>	<b>Code</b>											
Aluminum	1											
No cover	2											
<b>Options</b>	<b>Code</b>											
None	Blank											
Plunger with freeze rod	R											

<sup>1</sup>When used with valve size code 63, the flange is a triclamp style connection.  
NOTE: For other sizes and configurations not listed, please contact Dixon Sanitary engineering.



The Right Connection®

### Dixon Group Canada Limited

2200 Logan Avenue  
Winnipeg, MB R2R 0J2  
Phone: 877.963.4966  
Email: isales@dixonvalve.ca



Dixon®, founded in 1916, is a premier manufacturer and supplier of hose couplings, valves, dry-disconnects, swivels, and other fluid transfer and control products. The company's global reach includes a wide range of products for numerous industries including petroleum exploration, refining, transportation, chemical processing, food and beverage, steel, fire protection, construction, mining, and manufacturing. Dixon's strategic objective is to create solutions that make products safer, leak-free, longer-lasting, and always available.

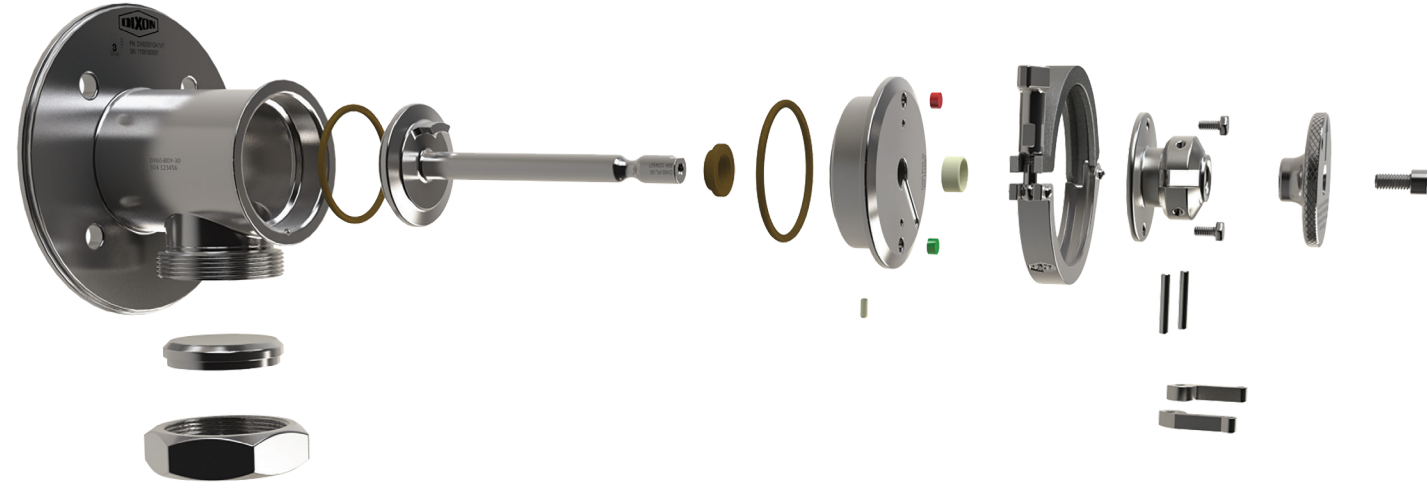


The Right Connection®



# DX60 Series Hygienic Tanker Valve

[canada.dixonvalve.com](http://canada.dixonvalve.com)  
Customer Service  
877.963.4966



# DX60 Series Hygienic Tanker Valve

**Application:**

- Used on food-grade stainless-steel bulk transport trailers to safely and hygienically load and unload various products including milk, juices, chocolate, glycerin, and many types of food-grade oils

**Size:**

- 3"

**Materials:**

- All product contact steel components: 304 stainless steel
- All non-product contact steel components: 304 stainless steel
- Product contact seal elastomers: FKM or Buna
- Stem bushings: PTFE

**Specifications:**

- Holding pressure: 75 PSI
- Temperature range: -20°F to 212°F (-28.9°C to 100°C), for other ranges contact Dixon Sanitary
- Surface ID finish: <math><32R\_a</math>
- Connections: flange x male threaded bevel
- Elastomers: FDA 21CFR 177.2600 & 3A 18-03 Class I
- Weight: 27 lbs. with standard plunger and aluminum cover

**Options:**

- 316L product contact components
- 15R<sub>a</sub>, 20R<sub>a</sub>, or 25R<sub>a</sub> finishes available
- Valve plunger with conical freeze rod
- Aluminum cover

**Approval:**

- 3A – authorization number 1655, 53-06 (compression-type valves) for CIP and COP



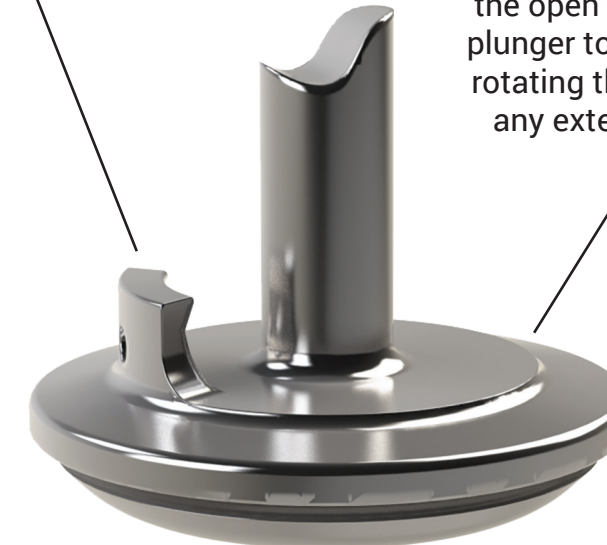
**Valve Housing**

Machined from solid bar with 5mm thick wall to provide reliable performance even in the most demanding applications. Internal geometry designed for optimal cleanability and drainability.



**Hygienic Single Acting**

Wiper lip seal provides improved cleanability, durability, and performance over standard O-ring seals in dynamic applications.

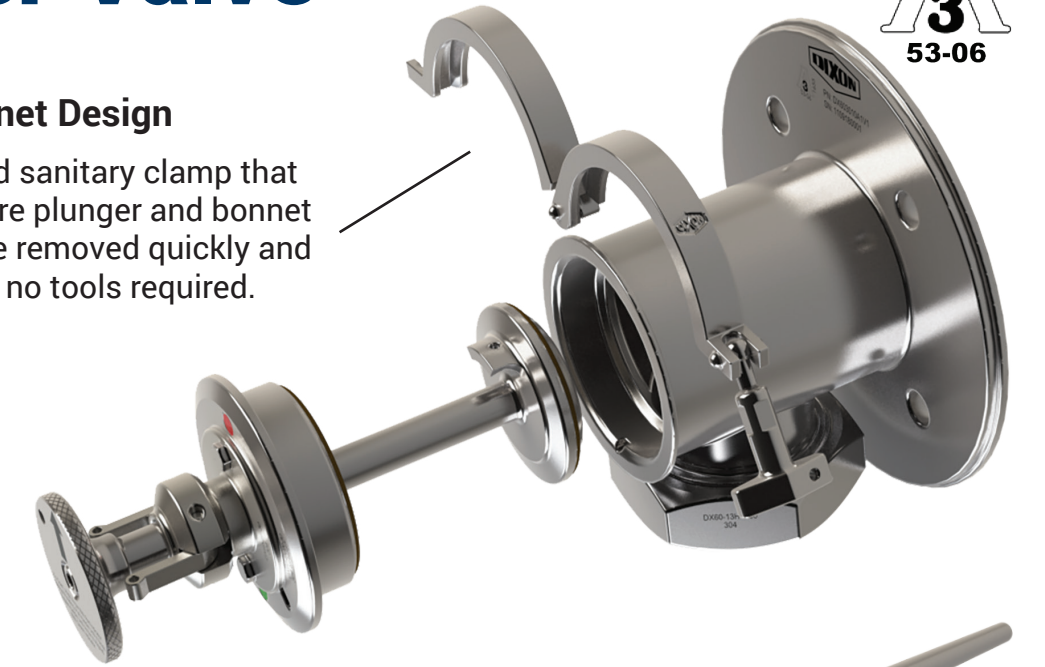


**Easy-Lock Plunger**

Our unique lock-arm design allows the plunger to be locked in the open position by pulling the plunger to the open position and rotating the handle. No need for any external locking devices.

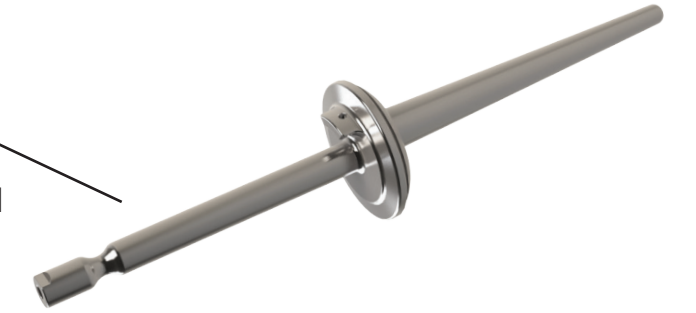
**Bonnet Design**

Uses standard sanitary clamp that allows the entire plunger and bonnet assembly to be removed quickly and easily with no tools required.



**Conical Freeze Rod**

Conical shaped rod allows flow around the rod as soon as the valve is slightly opened. Can be used for any product that does not flow easily.



**Patent-Pending Closure System**

Only valve on the market that has eliminated the pinch point between the handle and bonnet.

