

# Concealed Two Way Wall Hydrant Body

23-387 / 23-388

**Application:**

Concealed clappered body fire department connections to supplement the fire protection water supply, provide 500 GPM, minimums at 250 GPM per inlet (ref NFPA 14). Drop clappers provide unobstructed waterway. The flush design is desirable when appearance is a factor.

**Features:**

- U/L listed
- double clapper
- 7-5/8" center-line

## back outlet

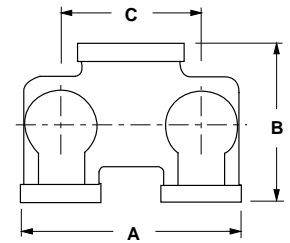
23-387

Outlet Female NPT	(2) Inlets Female NPT	Brass Part #	Powhatan Part #	Wt. Lbs.
4"	2½"	<b>CDMHCB40225</b>	23-387-00002	19
4"	3"	<b>CDMHCB40230</b>	23-387-00003	22
5"	3"	<b>CDMHCB50230</b>	23-387-00005	39
6"	2½"	<b>CDMHCB60225</b>	23-387-00006	20
6"	3"	<b>CDMHCB60230</b>	23-387-00007	39



### Dimensions

Size	A	B	C
4 x 2½ x 2½	11-1/8"	6"	7-5/8"
4 x 3 x 3	12-1/4"	8-1/8"	7-5/8"
5 x 3 x 3	11-13/16"	7-5/16"	7-5/8"
6 x 2½ x 2½	11-1/8"	7-3/8"	7-5/8"
6 x 3 x 3	12-1/4"	8-1/4"	7-5/8"



## bottom outlet

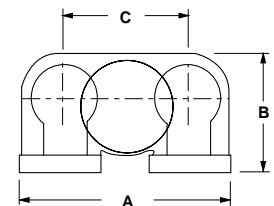
23-388

Outlet Female NPT	(2) Inlets Female NPT	Brass Part #	Powhatan Part #	Wt. Lbs.
5"	3"	<b>90CDMHCB50230</b>	23-388-00006	41.30
6"	2½"	<b>90CDMHCB60225</b>	23-388-00007	37.00
6"	3"	<b>90CDMHCB60230</b>	23-388-00008	41.00



### Dimensions

Size	A	B	C
5 x 3 x 3	12"	9-1/2"	7-5/8"
6 x 2½ x 2½	12"	7-1/4"	7-5/8"
6 x 3 x 3	12"	9-1/2"	7-5/8"



Bodies require wall plate WP2 (24-385).  
see page 744