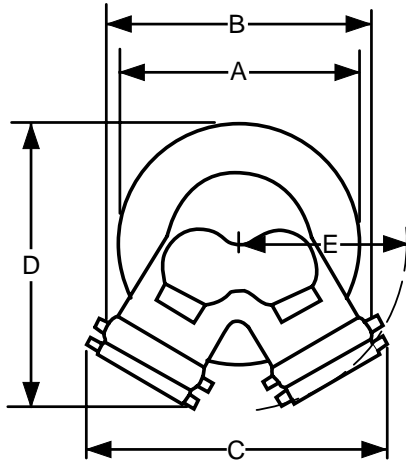


Two Way Sidewalk Siamese Assembly

21-207



Dimensions

Size	A	B	C	E	F
4 x 2½ x 2½	9¼	10-3/8	10¾	10-3/8	6-5/8
6 x 2½ x 2½	11¼	10½	11¾	13	7¼

Complete unit consists of:

- (1) 21-133 90° Siamese body, double clapper
- (2) 17-127 pin lug plugs with chains
- (1) 23-404 sleeve
- (1) 24-405 escutcheon plate

Features:

- Listed by Underwriters Laboratories
- Factory Mutual approved
- P polished
- C polished chrome plated

Outlet Female NPT	(2) Inlets Female NH (NST)	Dixon Part #	Powhatan Part #
4"	2½"	2WSA4025F	21-207-00001
4"	2½"	2WSA4025F-P	21-207-00003
4"	2½"	2WSA4025F-C	21-207-00005
4"	2½"	2WSA4025F-SP	21-207-00002
4"	2½"	2WSA4025F-SP-P	21-207-00004
4"	2½"	2WSA4025F-SP-C	21-207-00006
6"	2½"	2WSA6025F	21-207-00007
6"	2½"	2WSA6025F-P	21-207-00009
6"	2½"	2WSA6025F-C	21-207-00011
6"	2½"	2WSA6025F-SP	21-207-00008
6"	2½"	2WSA6025F-SP-P	21-207-00010
6"	2½"	2WSA6025F-SP-C	21-207-00012