

International Shore Connections



shore side



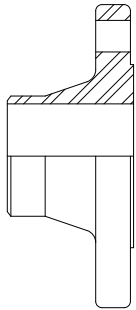
ship side

Features:

- meets US Coast Guard specifications for vessels 1000 gross tons or more
- makes possible the connection of two different threads between ship and shore or between ships
- 7" OD brass flange with 4 3/4" holes
- solid wedge disc with tapered seats
- includes 8 washers, 4 hexagon brass nuts, 4 hex head bolts, 1 washer, 1 fiber gasket
- working pressure: **300 PSI**

Description	Brass Part #	Wt. Lbs.
shore side	09-318-00001	7.38
ship side	09-319-00001	7.14

150 LB. ASA Forged Flanges Weld Neck



Feature:

- raised face

Size	Carbon Steel Part #
1"	WN100
1 1/4"	WN125
1 1/2"	WN150
2"	WN200
3"	WN300
4"	WN400
5"	WN500
6"	WN600
8"	WN800
10"	WN1000

150 LB. MSS Flanges



NPT	316 Stainless Steel Part #
1 1/2"	TRMS150
2"	TRMS200
3"	TRMS300
4"	TRMS400
6"	TRMS600

Flange Gaskets

Features:

- standard drop-ring type all 1/16" thick
- reference page 917 for joint sealant gasket material
- For dimensional information and diagrams, see pages 1167 and 1168

Size	Neoprene Part #	Klingsit® C-4401 Part #
1"	NG10	AG10
1 1/4"	NG15	AG15
1 1/2"	NG20	AG20
2"	NG25	AG25
2 1/2"	NG30	AG30
3"	NG35	AG35
4"	NG40	AG40
5"	NG50	---
6"	NG60	AG60
8"	NG80	AG80

