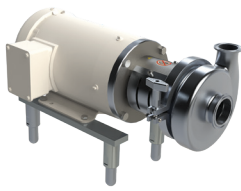


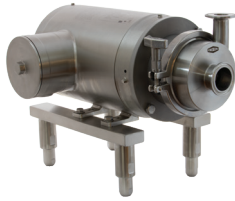


## Food Processing

### Centrifugal Pumps



BC/BP-Series



MB100-Series



ExD-Series

#### Applications

- Unloading
- Transfer
- CIP supply

#### Materials

- 316L
- Buna-N, EPDM, silicone, and FKM elastomers

#### Features

- Wet ends, motor pump units, and carts
- 3A certified for CIP

#### Sizes

- Inlet 1" to 6"
- Outlet 1-1/2" to 4"

### RZL-Series Positive Displacement Pumps



#### Applications

- Unloading
- Fluid transfer
- Metering
- CIP supply

#### Material

- 316L

#### Features

- Front loading seals
- Various rotor options
- 100 to 300 models stainless steel gear box standard
- 3A and EHEDG certified
- CIP certified

#### Sizes

- 1" to 10"

### BV2C-Series Ball Valves



#### Applications

- Isolation
- Diversion
- Control

#### Material

- CF8M

#### Features

- 5 encapsulated seat materials available
- ISO 5211 mounting pad standard
- Optional 2-way V-port seat
- Various actuation and control packages

#### Sizes

- 1/2" to 4"

### B5107 and B5116-Series Butterfly Valves



B5107-Series



B5116-Series

#### Applications

- Isolation
- Control

#### Materials

- B5107: 316L
- B5116: 304

#### Sizes

- 1/2" to 8"

#### Features

##### B5107

- Various actuation and control packages
- Multiple handle options
- Seat materials: silicone, EPDM, and FKM elastomers

##### B5116

- Silicone seat material only
- Manual handle only; cannot be actuated

## Food Processing

### Sanitary Filtration



#### Applications

- Liquid filtration

#### Materials

- 316L

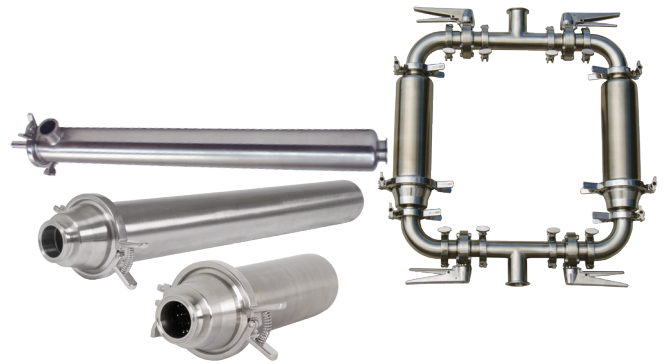
#### Cartridge Element Options

- Melt blown
- PES
- PHE
- Carbon
- Stainless steel

#### Sizes

- Port connection - 1" to 4"
- Number of elements - 1, 3, 5, 7, 12, and 21
- Cartridge element lengths - 10", 20", 30" and 40"

### Strainers



#### Application

- Filtering

#### Material

- 316L

#### Features

- Inline
- Side entry and side outlet
- Dual strainer assemblies using ball or butterfly valves
- 3A certified for CIP

#### Sizes

- 1" to 3"

### SSV-Series Seat Valves



#### Applications

- Isolation
- Diversion

#### Material

- 316L

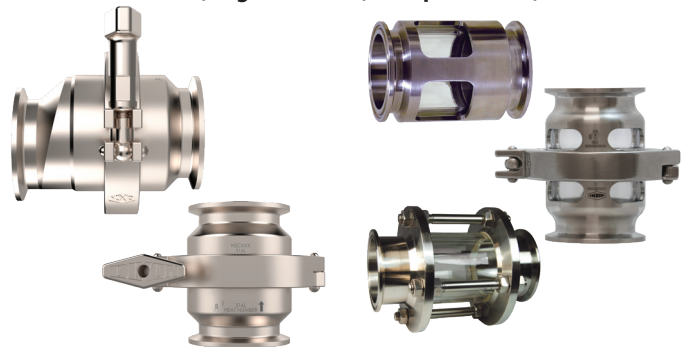
#### Features

- Body machined from solid bar
- Field serviceable
- Various control top options
- 3A certified for CIP

#### Sizes

- 1" to 4"

### Check Valves, Sight Glasses, Sample Valves, and Swivels



Spring Check Valves

Sight Glasses



Y-Ball Check Valve



Swivels



Sample Valves

