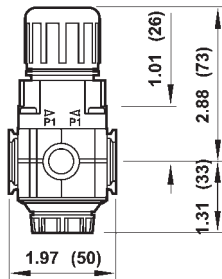


## Series 1 FRLs

### R72-Series Manifold Regulators

Manifold up to six regulators on a single air supply. Design allows in-line installation with hex nipple or modular installation with 72 series accessories.



**Feature**

- RG models supplied with GC620 gauge

**Specifications**

- Pressure range: **5-150 PSI**
- Inlet pressure: **300 PSI**
- Maximum temperature: **150°F (66°C)**

Port Size	Flow (SCFM)	with Gauge Part #	without Gauge Part #
1/4"	83	R72M-2RG	R72M-2R
3/8"	83	R72M-3RG	R72M-3R

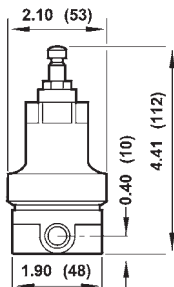
NOTE: SCFM ratings at 150 PSIG.



### R83-Series Cylinder Gas Regulator

**Applications**

- UL listed for service with carbon dioxide, water, pumped air, nitrogen, argon, helium, krypton, neon, and xenon
- *Not to be used with flammable gases*



**Features**

- Relieving type
- Two ports for high pressure and two ports for service

**Specifications**

- Pressure range: **5-125 PSI**
- Inlet pressure: **3,000 PSI**
- Maximum temperature: **140°F (60°C)**

Port Size	Flow (SCFM)	without Gauge Part #
1/4"	10	R83-200R

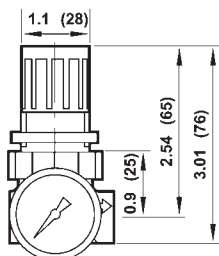
NOTE: SCFM ratings given at 1000 PSIG inlet pressure.



### R91-Series Miniature Water Regulator

**Application**

- Designed for use with deionized water and potable water systems, plastic and metal components in contact with fluid are approved by the National Sanitation Foundation (NSF) or meet Food and Drug Administration (FDA) recommendations for use in potable water systems



**Features**

- Non-relieving type
- Supplied with GC620 gauge
- Food grade elastomers

**Specifications**

- Inlet pressure: **150 PSI**
- Maximum temperature: **125°F (52°C)**
- Pressure range **5-50 PSIG**

Port Size	Flow (GPM)	with Gauge Part #
1/4"	<b>1.75</b>	R91-221RG

NOTE: SCFM ratings given at 100 PSIG inlet pressure  
 FRLs are designed for air service only, unless otherwise indicated.  
 See pages 333 to 338 for accessories.

