

WS-Series Hydraulic Couplings

Application

- Used extensively in oil field and offshore oil rig applications

Features

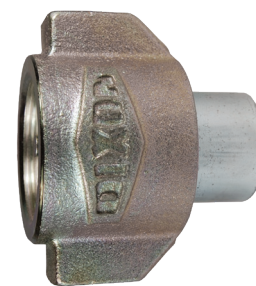
- Interchanges with Parker/Snap-Tite 75 series, Stucchi VOF, Faster OGV, Eaton FD85 and Holmbury LC
- Contact Dixon® for pressure ratings and other technical information

Specification

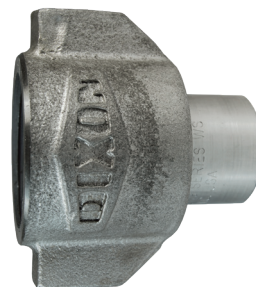
- Nitrile rubber seals standard, providing a temperature range of -40°F to 250°F (-40°C to 121°C)

Heavy-Duty Wingstyle Female Threaded Couplers

Body Size	Threads	Steel Part #	316 Stainless Steel Part #
3/4"	1/2" - 14 NPTF	6WSF4	---
	3/4" - 14 NPTF	6WSF6	6WSF6-SS
	3/4" - 14 BSPP	6WSBF6	6WSBF6-SS
	1-1/16" - 12 ORB	6WSOF6	---
1"	1" - 11-1/2 NPTF	8WSF8	8WSF8-SS
	1" - 11 BSPP	8WSBF8	8WSBF8-SS
	1-5/16" - 12 ORB	8WSOF8	---
	1-1/4" - 11-1/2 NPTF	10WSF10	10WSF10-SS
1-1/4"	1-1/4" - 11 BSPP	10WSBF10	10WSBF10-SS
	1-5/8" - 12 ORB	10WSOF10	---
	1-1/2" - 11-1/2 NPTF	12WSF12	12WSF12-SS
1-1/2"	1-1/2" - 11 BSPP	12WSBF12	12WSBF12-SS
	1-7/8" - 12 ORB	12WSOF12	---
	2" - 11-1/2 NPTF	16WSF16	16WSF16-SS
2"	2" - 11 BSPP	16WSBF16	16WSBF16-SS
	2-1/2" - 12 ORB	16WSOF16	---



steel



316 stainless

Heavy-Duty Wingstyle Female Threaded Plugs

Body Size	Threads	Steel Part #	316 Stainless Steel Part #
3/4"	1/2" - 14 NPTF	WS6F4	---
	3/4" - 14 NPTF	WS6F6	WS6F6-SS
	3/4" - 14 BSPP	WS6BF6	WS6BF6-SS
	1-1/16" - 12 ORB	WS6OF6	---
1"	1" - 11-1/2 NPTF	WS8F8	WS8F8-SS
	1" - 11 BSPP	WS8BF8	WS8BF8-SS
	1-5/16" - 12 ORB	WS8OF8	---
	1-1/4" - 11-1/2 NPTF	WS10F10	WS10F10-SS
1-1/4"	1-1/4" - 11 BSPP	WS10BF10	WS10BF10-SS
	1-5/8" - 12 ORB	WS10OF10	---
	1-1/2" - 11-1/2 NPTF	WS12F12	WS12F12-SS
1-1/2"	1-1/2" - 11 BSPP	WS12BF12	WS12BF12-SS
	1-7/8" - 12 ORB	WS12OF12	---
	2" - 11-1/2 NPTF	WS16F16	WS16F16-SS
2"	2" - 11 BSPP	WS16BF16	WS16BF16-SS
	2-1/2" - 12 ORB	WS16OF16	---



steel



316 stainless