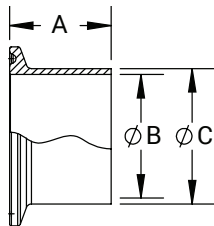
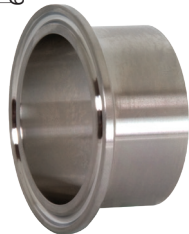


Clamp Fittings - Ferrules
Short Weld Ferrules - 14WMP

| Tube O.D. | A (in) | B (in) | C (in) | 304 Stainless Steel Part # | 316L Stainless Steel Part # |
|-----------|--------|--------|--------|----------------------------|-----------------------------|
| 1/2" | .50 | .37 | .50 | 14WMP-G50 | 14WMP-R50 |
| 3/4" | .50 | .62 | .75 | 14WMP-G75 | 14WMP-R75 |
| 1" | .50 | .87 | 1.00 | 14WMP-G100 | 14WMP-R100 |
| 1-1/2" | .50 | 1.37 | 1.50 | 14WMP-G150 | 14WMP-R150 |
| 2" | .50 | 1.87 | 2.00 | 14WMP-G200 | 14WMP-R200 |
| 2-1/2" | .50 | 2.37 | 2.50 | 14WMP-G250 | 14WMP-R250 |
| 3" | .50 | 2.87 | 3.00 | 14WMP-G300 | 14WMP-R300 |
| 4" | .62 | 3.83 | 4.00 | 14WMP-G400 | 14WMP-R400 |
| 5" | .75 | 4.78 | 5.00 | 14WMP-G500 | 14WMP-R500 |
| 6" | .88 | 5.78 | 6.00 | 14WMP-G600 | 14WMP-R600 |
| 8" | .88 | 7.78 | 8.00 | 14WMP-G800 | 14WMP-R800 |
| 10" | .88 | 9.76 | 10.00 | 14WMP-G1000 | 14WMP-R1000 |
| 12" | .88 | 11.76 | 12.00 | 14WMP-G1200 | 14WMP-R1200 |

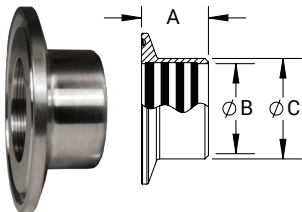


Long Weld Ferrules - L14AM7

| Tube O.D. | A (in) | B (in) | C (in) | 304 Stainless Steel Part # | 316L Stainless Steel Part # |
|-----------|--------|--------|--------|----------------------------|-----------------------------|
| 1/2" | 1.13 | .37 | .50 | L14AM7-G50 | L14AM7-R50 |
| 3/4" | 1.13 | .62 | .75 | L14AM7-G75 | L14AM7-R75 |
| 1" | 1.13 | .87 | 1.00 | L14AM7-G100 | L14AM7-R100 |
| 1-1/2" | 1.13 | 1.37 | 1.50 | L14AM7-G150 | L14AM7-R150 |
| 2" | 1.13 | 1.87 | 2.00 | L14AM7-G200 | L14AM7-R200 |
| 2-1/2" | 1.13 | 2.37 | 2.50 | L14AM7-G250 | L14AM7-R250 |
| 3" | 1.13 | 2.87 | 3.00 | L14AM7-G300 | L14AM7-R300 |
| 4" | 1.13 | 3.83 | 4.00 | L14AM7-G400 | L14AM7-R400 |
| 5" | 1.13 | 4.78 | 5.00 | L14AM7-G500 | L14AM7-R500 |
| 6" | 1.50 | 5.78 | 6.00 | L14AM7-G600 | L14AM7-R600 |
| 8" | 1.50 | 7.78 | 8.00 | L14AM7-G800 | L14AM7-R800 |
| 10" | 1.75 | 9.76 | 10.00 | L14AM7-G1000 | L14AM7-R1000 |
| 12" | 1.75 | 11.76 | 12.00 | L14AM7-G1200 | L14AM7-R1200 |

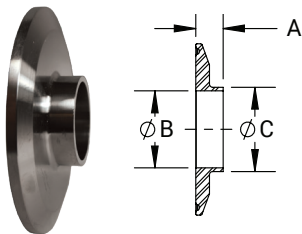
M

Reducing Roll-on Ferrules for Expanding - B31RMP



| Clamp End | Tube O.D. | A (in) | B (in) | C (in) | 304 Stainless Steel Part # |
|-----------|-----------|--------|--------|--------|----------------------------|
| 2" | 1" | .75 | 1.00 | 1.16 | B31RMP-G200100 |
| 2" | 1-1/2" | 1.13 | 1.50 | 1.68 | B31RMP-G200150 |

Reducing Ferrules - B31WMP



| Tube O.D. | A (in) | B (in) | C (in) | 304 Stainless Steel Part # | 316L Stainless Steel Part # |
|-----------------|--------|--------|--------|----------------------------|-----------------------------|
| 2" x 1" | .50 | .87 | 1.00 | B31WMP-G200100 | B31WMP-R200100 |
| 2" x 1-1/2" | .50 | 1.37 | 1.50 | B31WMP-G200150 | B31WMP-R200150 |
| 2-1/2" x 1-1/2" | .50 | 1.37 | 1.50 | B31WMP-G250150 | B31WMP-R250150 |
| 2-1/2" x 2" | .50 | 1.87 | 2.00 | B31WMP-G250200 | B31WMP-R250200 |
| 3" x 2" | .50 | 1.87 | 2.00 | B31WMP-G300200 | B31WMP-R300200 |
| 3" x 2-1/2" | .50 | 2.37 | 2.50 | B31WMP-G300250 | B31WMP-R300250 |
| 4" x 2" | .63 | 1.87 | 2.00 | B31WMP-G400200 | B31WMP-R400200 |
| 4" x 2-1/2" | .63 | 2.37 | 2.50 | B31WMP-G400250 | B31WMP-R400250 |
| 4" x 3" | .63 | 2.87 | 3.00 | B31WMP-G400300 | B31WMP-R400300 |

NOTE: Additional sizes available.