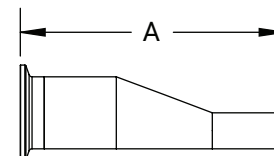
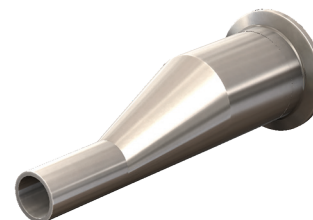


### High Purity BioPharm Fittings

#### Clamp x Weld Eccentric Reducers - T32M


  
621 63-04

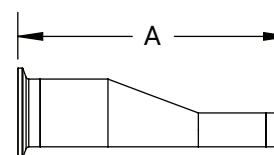
| Tube O.D.       | A (in) | PL Finish - SF1 | PM Finish - SF4 |
|-----------------|--------|-----------------|-----------------|
| 3/4" x 1/2"     | 3.00   | T32M-075050PL   | T32M-075050PM   |
| 1" x 1/2"       | 3.50   | T32M-100050PL   | T32M-100050PM   |
| 1" x 3/4"       | 3.00   | T32M-100075PL   | T32M-100075PM   |
| 1-1/2" x 1/2"   | 4.50   | T32M-150050PL   | T32M-150050PM   |
| 1-1/2" x 3/4"   | 4.00   | T32M-150075PL   | T32M-150075PM   |
| 1-1/2" x 1"     | 4.00   | T32M-150100PL   | T32M-150100PM   |
| 2" x 1/2"       | 6.50   | T32M-200050PL   | T32M-200050PM   |
| 2" x 3/4"       | 6.00   | T32M-200075PL   | T32M-200075PM   |
| 2" x 1"         | 6.00   | T32M-200100PL   | T32M-200100PM   |
| 2" x 1-1/2"     | 4.00   | T32M-200150PL   | T32M-200150PM   |
| 2-1/2" x 1/2"   | 8.50   | T32M-250050PL   | T32M-250050PM   |
| 2-1/2" x 3/4"   | 8.00   | T32M-250075PL   | T32M-250075PM   |
| 2-1/2" x 1"     | 8.00   | T32M-250100PL   | T32M-250100PM   |
| 2-1/2" x 1-1/2" | 6.00   | T32M-250150PL   | T32M-250150PM   |
| 2-1/2" x 2"     | 4.25   | T32M-250200PL   | T32M-250200PM   |
| 3" x 1"         | 10.00  | T32M-300100PL   | T32M-300100PM   |
| 3" x 1-1/2"     | 8.00   | T32M-300150PL   | T32M-300150PM   |
| 3" x 2"         | 6.25   | T32M-300200PL   | T32M-300200PM   |
| 3" x 2-1/2"     | 4.25   | T32M-300250PL   | T32M-300250PM   |
| 4" x 1"         | 14.13  | T32M-400100PL   | T32M-400100PM   |
| 4" x 1-1/2"     | 12.13  | T32M-400150PL   | T32M-400150PM   |
| 4" x 2"         | 10.38  | T32M-400200PL   | T32M-400200PM   |
| 4" x 2-1/2"     | 8.38   | T32M-400250PL   | T32M-400250PM   |
| 4" x 3"         | 6.38   | T32M-400300PL   | T32M-400300PM   |
| 6" x 3"         | 8.75   | T32M-600300PL   | T32M-600300PM   |
| 6" x 4"         | 9.00   | T32M-600400PL   | T32M-600400PM   |



BPE Table DT-4.1.3-2(a)

### Clamp x Clamp Eccentric Reducers - T3214MP

| Tube O.D.       | A (in) | PL Finish - SF1 | PM Finish - SF4 |
|-----------------|--------|-----------------|-----------------|
| 3/4" x 1/2"     | 2.00   | T3214MP075050PL | T3214MP075050PM |
| 1" x 1/2"       | 2.50   | T3214MP100050PL | T3214MP100050PM |
| 1" x 3/4"       | 2.00   | T3214MP100075PL | T3214MP100075PM |
| 1-1/2" x 1/2"   | 3.50   | T3214MP150050PL | T3214MP150050PM |
| 1-1/2" x 3/4"   | 3.00   | T3214MP150075PL | T3214MP150075PM |
| 1-1/2" x 1"     | 3.00   | T3214MP150100PL | T3214MP150100PM |
| 2" x 1/2"       | 5.50   | T3214MP200050PL | T3214MP200050PM |
| 2" x 3/4"       | 5.00   | T3214MP200075PL | T3214MP200075PM |
| 2" x 1"         | 5.00   | T3214MP200100PL | T3214MP200100PM |
| 2" x 1-1/2"     | 3.00   | T3214MP200150PL | T3214MP200150PM |
| 2-1/2" x 1/2"   | 7.50   | T3214MP250050PL | T3214MP250050PM |
| 2-1/2" x 3/4"   | 7.00   | T3214MP250075PL | T3214MP250075PM |
| 2-1/2" x 1"     | 7.00   | T3214MP250100PL | T3214MP250100PM |
| 2-1/2" x 1-1/2" | 5.00   | T3214MP250150PL | T3214MP250150PM |
| 2-1/2" x 2"     | 3.00   | T3214MP250200PL | T3214MP250200PM |
| 3" x 1"         | 9.00   | T3214MP300100PL | T3214MP300100PM |
| 3" x 1-1/2"     | 7.00   | T3214MP300150PL | T3214MP300150PM |
| 3" x 2"         | 5.00   | T3214MP300200PL | T3214MP300200PM |
| 3" x 2-1/2"     | 3.00   | T3214MP300250PL | T3214MP300250PM |
| 4" x 1"         | 13.13  | T3214MP400100PL | T3214MP400100PM |
| 4" x 1-1/2"     | 11.13  | T3214MP400150PL | T3214MP400150PM |
| 4" x 2"         | 9.13   | T3214MP400200PL | T3214MP400200PM |
| 4" x 2-1/2"     | 7.13   | T3214MP400250PL | T3214MP400250PM |
| 4" x 3"         | 5.13   | T3214MP400300PL | T3214MP400300PM |
| 6" x 3"         | 7.63   | T3214MP600300PL | T3214MP600300PM |
| 6" x 4"         | 7.63   | T3214MP600400PL | T3214MP600400PM |


  
621 63-04


BPE Table DT-4.1.3-3(a)

M

NOTE: BPE 2016 Specifications

PL Finish – SF1

O.D. = 32Ra Mechanically Polished

I.D. = 20Ra Mechanically Polished

PM Finish – SF4

O.D. = 32Ra Mechanically Polished

I.D. = 15Ra Mechanically Polished and Electropolished