

### Single Male Outlet with Hex (open snoot)

**Application**

- Used to connect fire hose to a standpipe or sprinkler system

**Features**

- Other sizes, threads, and configurations are available, consult Dixon® for information
- Finishes: -P polished, -C polished chrome plated



polished



polished chrome plated

Female NPT Thread	Male Thread	Cast Brass Part #
2-1/2"	2-1/2" NST (NH)	MOC250F-P
		MOC250F-C
3"	2-1/2" NST (NH)	MOC3025F-P
	3" NST (NH)	MOC3025F-C
		MOC300F-P

Female NPT Thread	Male Thread	Cast Brass Part #
2-1/2"	2-1/2" NYC	MOC250NYC-P
	2-1/2" NYFD	MOC250NYFD-P

### Female to Male Hex Nipples

**Feature**

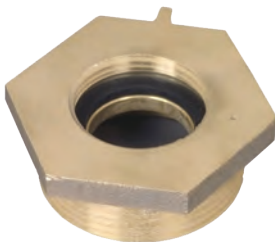
- Other configurations are also available, consult Dixon® for information



reducer



same size



increaser

Female Thread	Male Thread	Cast Brass Part #
3/4 GHT	1" NPT	FM7610T
1" NPSH	3/4" GHT	FM10S76
	1-1/2" NPSH	FM10S15T
1" NPT	3/4" GHT	FM1076
	1" NPSH	FM1010
	1" NST (NH)	FM1010F
	1-1/2" NPSH	FM1015
	1-1/2" NST (NH)	FM1015F
1" NST (NH)	1" NPT	FM10F10T
1-1/2" NPSH	1-1/2" NST (NH)	FM15F15F
	1-1/2" NST (NH)	FM15S15F
	1-1/2" NPT	FM15S15T
	2-1/2" CT*	FM15S25_*
1-1/2" NPT	1-1/2" NPSH	FM1515
	1-1/2" NST (NH)	FM1515F
	2-1/2" CT*	FM15S25_*
	2-1/2" ST (NH)	FM1525F
	3" NST (NH)	FM1530F
1-1/2" NST (NH)	1-1/2" NPSH	FM15F15S
	1-1/2" NPT	FM15F15T
	1-1/2" NST (NH)	FM15F15F
	2" NPT	FM15F20T
	2-1/2" NPT	FM15F25T
	2-1/2" NST (NH)	FM15F25F
	3 NST (NH)	FM15F30F

Table continued on next page

NOTE: All adapters are made to approved Dixon® specifications.  
 NOTE: Replacement washers can be found on page 824

- other configurations are also available, consult Dixon® for information
- \_\* Customer Thread (must specify) refer to legend on pages 882-885