

Mechanical Tees - Series-T



Application

- Provides a fast easy way to install a threaded connection along a length of pipe; after drilling or cutting a hole in the pipe at the location of the branch connection, simply attach the clamps around the pipe for a leak-free threaded outlet connection; see chart below for drilling hole specifications

Features

- Supplied with EPDM gasket
- See pages 976, 981-982 for replacement gaskets, nuts, and bolts

Material

- Ductile iron body with rust inhibiting paint

Specification

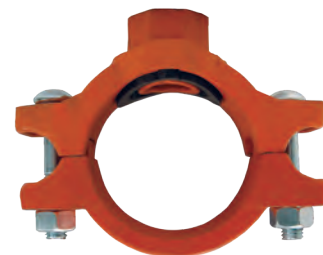
- Maximum operating pressure: **300 PSI at 70°F (21°C)**

Approvals

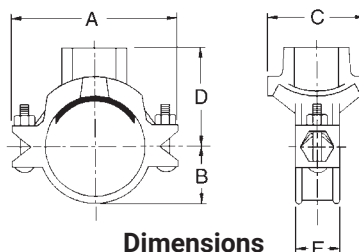
- UL listed and Factory Mutual approved

Comparable to

- Victaulic's #920
- Grinnell's #7045



Nominal Size	Branch Size	Hole Saw Diameter	Maximum End Load (Lbs.)	Bolts			Ductile Iron Part #
				qty	size	length	
2"	1"	1-1/2"	1-5/8"	2	3/8"	2"	MT2010
	1-1/4"	1-3/4"	1-7/8"	2	3/8"	2"	MT20125
	1-1/2"	1-3/4"	1-7/8"	2	3/8"	2"	MT20150
2-1/2"	1-1/4"	2"	2-1/8"	2	1/2"	2-5/8"	MT250125
3"	1"	1-1/2"	1-5/8"	2	1/2"	2-3/4"	MT3010
	1-1/2"	2"	2-1/8"	2	1/2"	2-3/4"	MT30150
4"	1"	1-1/2"	1-5/8"	2	1/2"	2-3/4"	MT4010
	1-1/4"	2"	2-1/8"	2	1/2"	2-3/4"	MT40125
	1-1/2"	2"	2-1/8"	2	1/2"	2-3/4"	MT40150
	2"	2-1/2"	2-5/8"	2	1/2"	2-3/4"	MT4020
	2-1/2"	2-3/4"	2-7/8"	2	1/2"	2-3/4"	MT40250
	3"	3-1/2"	3-5/8"	2	1/2"	2-3/4"	MT4030
	1-1/4"	2-1/2"	2-5/8"	2	5/8"	3-1/4"	MT60125
6"	1-1/2"	2-1/2"	2-5/8"	2	5/8"	3-1/4"	MT60150
	2"	2-1/2"	2-5/8"	2	5/8"	3-1/4"	MT6020
	3"	3-1/2"	3-5/8"	2	5/8"	3-1/4"	MT6030



Dimensions

A	B	C	D	E
4-1/2"	1-3/8"	2-3/4"	2-1/4"	1-7/8"
4-1/2"	1-3/8"	2-3/4"	2-1/2"	1-7/8"
4-1/2"	1-3/8"	2-3/4"	2-1/2"	1-7/8"
5-5/32"	1-11/16"	3"	2-31/32"	2"
5-13/16"	1-11/16"	3-11/32"	3"	2"
6-11/32"	2-1/8"	3-3/32"	3-1/16"	2"
6-11/32"	2-1/8"	3-3/4"	3-3/8"	2"
7-5/16"	2-9/16"	3-3/32"	3-1/2"	2"
7-5/16"	2-9/16"	3-3/4"	3-7/8"	2"
7-5/16"	2-9/16"	3-3/4"	3-7/8"	2"
7-5/16"	2-9/16"	4-1/8"	4"	2"
7-5/16"	2-9/16"	4-3/8"	4"	2"
7-5/16"	2-9/16"	5-1/4"	4-1/4"	2"
10-5/32"	3-11/16"	4-1/8"	4-7/8"	2-1/4"
10-5/32"	3-11/16"	4-1/8"	4-7/8"	2-1/4"
10-5/32"	3-11/16"	4-1/8"	5"	2-1/4"
10-5/32"	3-11/16"	5-1/4"	5-3/8"	2-1/4"