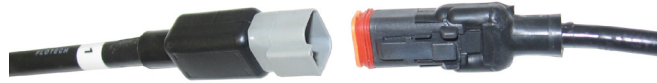




The Right Connection®

FloTech™ Overfill Detection Systems

Checkmate Plug-n-Play System



Many overfill system breakdowns are caused by failed or poor wiring connections. The required amperage within the overfill system is so low that poorly wired or corroded connections tend to fail because the low current cannot pass through. Dixon™ developed the innovative FloTech™ Plug-n-Play system to remove the possibility of wiring system problems.

Features:

- Prewired cables and plugs make it easier to install our Plug-n-Play system compared to conventional systems; just mount the components and plug them all together
- All connections are prewired and tested at the factory
- Secure, weather tight connections remove the possibility of poor wiring connections
- Sealed connectors must pass IP67 and DIN40050 salt spray tests
- Biofuel compatible up to E100 (100% Ethanol) and B100 (100% bio diesel)

Materials: Dependant upon the component, see each product section for materials.

Standards:

- Manufactured to American Petroleum Institute standard API RP-1004
- Factory Mutual approval
- Canadian Standards Association approval

Checkmate Plug-n-Play System Stand Alone Monitors



Features:

- Prewired and factory tested with Plug-n-Play cabling and plugs
- Water-tight integrated fuse holder, stainless steel hardware and terminal block within the aluminum housing
- Monitors must pass dust and 1 metre water immersion test and DIN40050 salt spray test
- High tech color coded display shows well on trailers
- Includes advanced diagnostic capabilities as well as signal translation abilities for all socket types (optic, thermistor or float)
- Offers true load at any rack compatibility
- Repair kits and replacement parts available
- 'B' train onboard monitors are factory configured for up to 3 front and 3 rear compartments. Please contact Dixon™ for more information
- Available integrated options include: top (overflow) only monitoring, or both top (overflow) and bottom (retain) monitoring

Part #	Description
FT208P	Checkmate monitor with Plug-n-Play connectors, top overflow protection only
FT208PP	Checkmate monitor with Plug-n-Play connectors, top overflow and bottom retain detection
FT208PPKC	Checkmate monitor with Plug-n-Play connectors, top overflow and bottom retain detection, for Canadian 'B' trains

FloTech™ Overfill Detection Systems

Checkmate Plug-n-Play System



Overfill detection sensors detect a pending overfill condition inside the fuel tank compartment. When they are wetted (come in contact with the fuel) they signal the fuel loading rack to close the fuel supply control valve to prevent a spill.

Features

- Prewired and factory tested with Plug-n-Play cables and plugs
- Easy to install, just mount the housing into the tank and plug the cables together
- Trouble free FloTech™ probe incorporates a double elastomer design which seals and secures the sensitive glass optic prism tip
- Flexible elastomer seals allow thermal expansion and resistance to steam cleaning and petroleum chemical attack
- Custom lengths available upon request
- FT151P series cast aluminum sensor housing contains a Plug-n-Play probe. The housing has a 2" NPT mounting thread, heavy duty stainless steel hardware, and FKM probe seal for installation into a 2" NPT threaded port or a 2 3/8" diameter tank opening
- Available integrated options include: top (overfill) only monitoring, or both top (overfill) and bottom (retain) monitoring

Part #	Description
FT151P	Housing with 7" Plug-n-Play overfill detection probe, with Plug-n-Play harness connector
FT151P-12	Housing with 12" Plug-n-Play overfill detection probe, with Plug-n-Play harness connector
FT151P-18	Housing with 18" Plug-n-Play overfill detection probe, with Plug-n-Play harness connector

Checkmate Plug-n-Play System Retain Sensors

Retain sensors inform the loading terminal if the tank compartments are empty, or if there is product left in the tank prior to reloading the tank (product has been retained).

Features:

- Prewired and factory tested with Plug-n-Play cabling and plugs
- Easy to install, just mount the housing into the tank and plug the cables together
- Trouble free FloTech™ probes/sensors incorporate a double elastomer design which seal and secure the sensitive optic prism tip
- Flexible elastomer seals allow thermal expansion and resistance to steam cleaning and petroleum chemical attack
- The FT152 bottom detection sensor ships with a 1/2" NPT weld-on-aluminum half coupling for mounting. Stainless steel main sensor prevents galling in the tank. Plastic wiring box prevents corrosion
- Repair kits and replacement parts available



Part #	Description
FT152P	Housing with Plug-n-Play retain probe, with Plug-n-Play harness connector



connect with us

Dixon Group Canada Limited

ph 877.963.4966 • fx 780.463.9205
7011-68 Ave. • Edmonton, AB T6B 3E3
canada.dixonvalve.com

scan to visit our website

