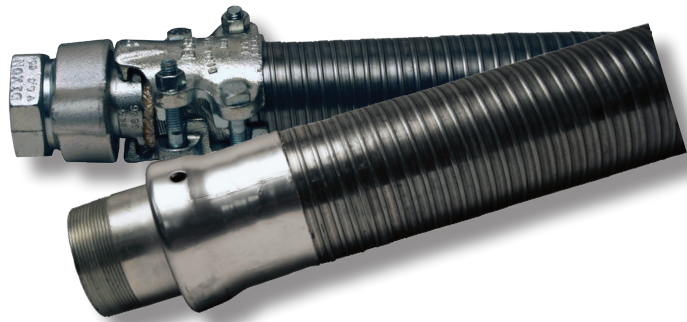




The Right Connection®

Black Liquor Hose Assemblies

For use in severe conditions found in the pulp and paper industry



Application:

- used to convey Black Liquor in applications where heat and abrasion are a concern such as the pulp and paper industry

Features:

- specification: 800E
- multiple layers of 1000°F/ 538 C° rated heat resistant insulation
- temperature rating depends on specific application, consult Dixon for details

Materials:

- tube: Butyl blend
- reinforcement: wire braid
- cover: EPDM
- GSM Ball Joint Armor: galvanized steel or stainless steel

Sizes:

- ½" through 3"

| Hose Dimension | | Minimum Bend Radius | PSI | | Approximate Weight / Ft. Lbs. |
|----------------|----------------|---------------------|---------|-------|-------------------------------|
| ID | Approximate OD | | Working | Burst | |
| ½" | 1-15/64" | 3" | 250 | 2500 | 1.25 |
| ¾" | 1-34/64" | 4½" | 250 | 2500 | 2.0 |
| 1" | 1-54/64" | 5" | 250 | 2500 | 2.25 |
| 1¼" | 2-8/64" | 6" | 250 | 2500 | 3.0 |
| 1½" | 2-26/64" | 7" | 250 | 2500 | 3.5 |
| 2" | 3" | 10" | 250 | 2500 | 4.5 |
| 2½" | 3-24/64" | 13" | 250 | 2500 | 6.25 |
| 3" | 4-9/64" | 16" | 250 | 2500 | 7.5 |

connect with us on



Dixon Specialty Products

ph 877.963.4966 • fx 204.633.6119
 2200 Logan Avenue • Winnipeg • MB R2R 0J2
canada.dixonvalve.com

scan to contact us

