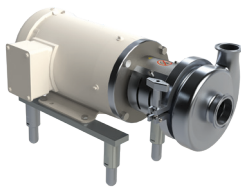
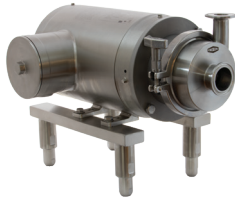


Chemical

Centrifugal Pumps



BC/BP-Series



MB100-Series



ExD-Series

Applications

- Unloading
- Transfer
- CIP supply

Materials

- 316L
- Buna-N, EPDM, silicone, and FKM elastomers

Features

- Wet ends, motor pump units, and carts
- 3A certified for CIP

Sizes

- Inlet 1" to 6"
- Outlet 1-1/2" to 4"

RZL-Series Positive Displacement Pumps



Applications

- Unloading
- Fluid transfer
- Metering
- CIP supply

Material

- 316L

Features

- Front loading seals
- Various rotor options
- 100 to 300 models stainless steel gear box standard
- 3A and EHEDG certified
- CIP certified

Sizes

- 1" to 10"

Ball Valves



Applications

- Isolation
- Diversion
- Control

Materials

- Stainless steel and brass

Features

- Sanitary
- Industrial
- 2-piece and 3-piece design
- Various actuator and control packages

Sizes

- 1/4" to 4"

Industrial Butterfly Valves



Lug Butterfly Valve



Wafer Butterfly Valve

Applications

- Isolation
- Control

Materials

- Cast iron, stainless steel, aluminum, ductile iron and more

Features

- Various body, disc and seat material options
- ISO 5211 mounting pad
- Various actuator and control packages

Sizes

- 1-1/2" to 36"

Chemical

Industrial Filtration



Application

- Liquid filtration

Materials

- Carbon steel
- 304, 316, or 316L

Media Types

- Bag
- String
- Melt blown
- PHE
- Carbon
- Stainless steel

Sizes

- Bag - #1, #2, #3, #4, and #12
- Cartridge element lengths - 10" to 40"

Pressure Relief Valves



Application

- Liquids

Materials

- Product contact 316L
- Non-product contact 304
- O-rings: EPDM or FKM

Features

- Valve opens when set pressure is reached
- Machined from solid bar
- Various pressure ranges
- Standard clamp connections
- 3A certified for COP

Sizes

- 1-1/2" to 2"

Swivels



Style 20

Style 40

Applications

- To rotate hose assemblies without disconnecting

Materials

- 316L
- Silicone or EPDM gaskets

Features

- Clamp or weld connection
- Available in Styles 20 through 70
- 3A certified for COP

Sizes

- 1" to 4"

Weld Fittings



Materials

- 304 and 316L

Finish

- 3A sanitary finish ID and OD
- Unpolished

Sizes

- 1/2" to 12"

